

 **MicroCentric**

*Workholding  
Options for*

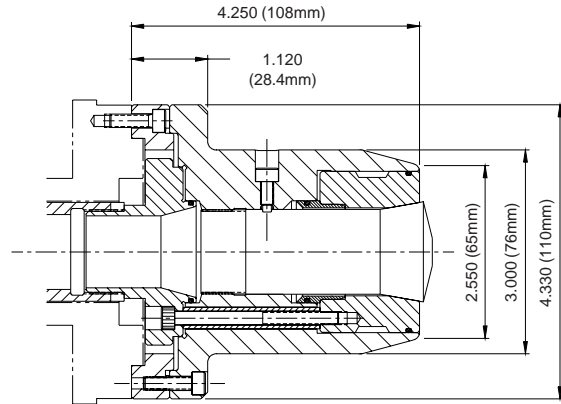
**PRODIGY**  
**SNK**

*GT-27 Lathes*



[www.MicroCentric.com](http://www.MicroCentric.com)

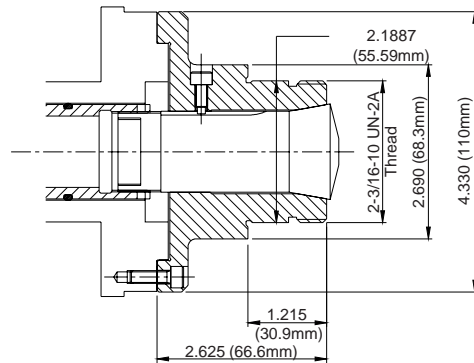
## 5C Dead Length Chuck



MicroCentric's 5C dead length collet chuck provides a fixed collet alternative to the standard 5C pullback style nose that is standard on the SNK Prodigy. The collet is threaded into the chuck body and remains fixed as the chuck is actuated. This chuck includes a mounting plate and draw tube adapter for the Prodigy's standard air cylinder.

<b>Chuck Model</b>	<b>CB5C-D/SNK</b>
<b>Collet</b>	5C
<b>Through Capacity</b>	1.062" (27mm)
<b>Draw Tube Stroke</b>	.078" (2mm)
<b>Max Draw Tube Force</b>	2,950 lb (1,340 kgf)
<b>Max Speed</b>	6,000 rpm
<b>Weight</b>	7.5 lb (3.4 kg)

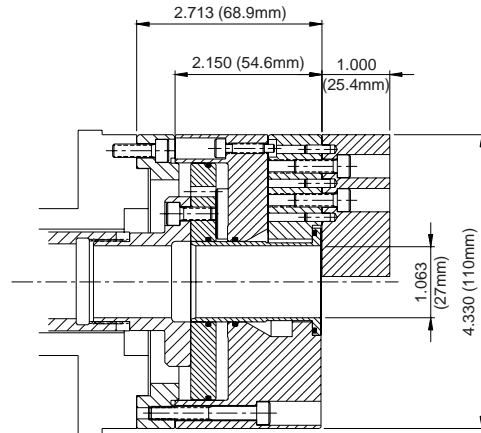
## 5C Threaded Collet Nose



MicroCentric's 5C threaded nose will enable use of standard 5C tooling, including step chucks. The 5C threaded collet nose is designed to mount directly to the SNK Prodigy spindle nose in place of the standard 5C collet nose.

<b>Chuck Model</b>	<b>CB5C-TH/SNK</b>
<b>Collet Capacity</b>	5C - 1.062" (27mm)
<b>Max Draw Tube Force</b>	2,950 lb (1,340 kgf)
<b>Max Speed</b>	6,000 rpm
<b>Weight</b>	5.2 lb (2.3 kg)

## Precision 3 and 2 Jaw Power Chuck



MicroCentric PPC110D power chucks feature .0001" (0.025mm) repeating accuracy for precision finishing applications. Available in 3 and 2 jaw configurations with dowel pin or MicroCentric's patented QC jaw locating system. PPC110D chucks include a spindle mounting plate and draw tube adapter for the SNK Prodigy's standard air cylinder. Models with larger jaw stroke are also available. Special top jaws, part stops, and ejectors for specific workpiece applications are quoted on request.

Model	No. of Jaws	Top Jaw Location
PPC110D-3/SNK	3	Dowel Pin
PPC110D-3/QC/SNK	3	QC
PPC110D-2/SNK	2	Dowel Pin
PPC110D-2/QC/SNK	2	QC

### Chuck Specifications

Repeating Accuracy	.0001" (0.0025mm) TIR
Jaw Stroke	.120" (3mm)
Draw Tube Stroke	.340" (9mm)
Max Draw Tube Force	2,060 lb (934 kgf)
Max Clamping Force	3,350 lb (1,520 kgf)
Max Speed	6,000 rpm
Weight	9.2 lb (4.1 kg)

## Blank Top Jaws

### Dowel Pin Located Jaws

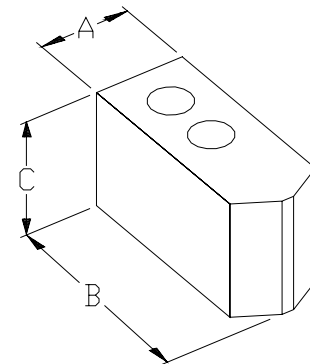
Jaw Model (Dowel Pin)	Height (C)
P4-100S	1.00" (25.4mm)
P4-150S	1.50" (38.1mm)
P4-200S	2.00" (50.8mm)

Dowel pin located top jaws are available in 1018 mild steel and 2024 aluminum.

### QC Top Jaws

Jaw Model (QC)	Height (C)
QP4-100S	1.00" (25.4mm)
QP4-150S	1.50" (38.1mm)
QP4-200S	2.00" (50.8mm)

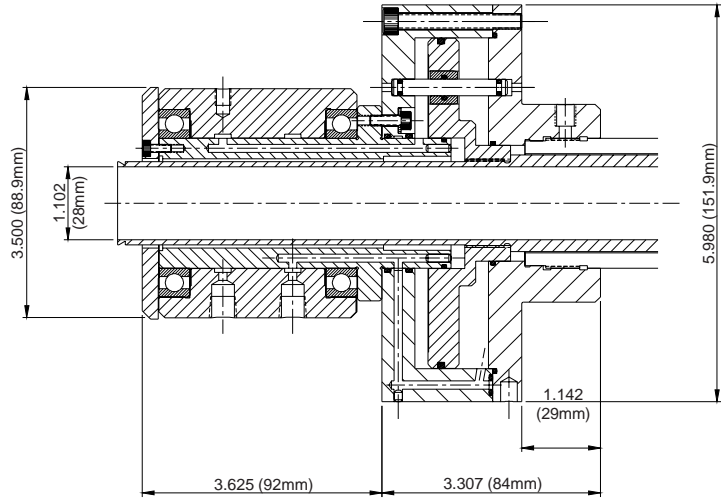
QC top jaws are made from A-2 tool steel and enable machined jaws to be remounted to the chuck and maintain .0002" (0.005mm) maximum part runout.



A = .750" (19mm)  
B = 2.12" (54mm)

## Standard Air Collet Chuck

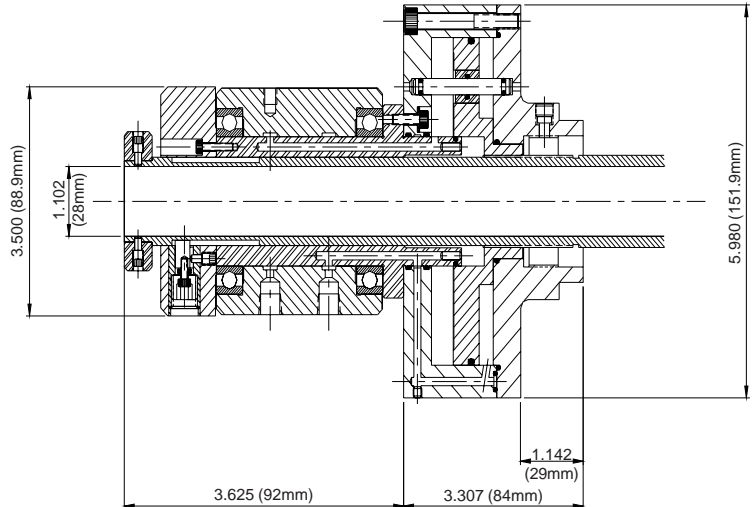
LDZ-150 air cylinders feature a high performance air bearing for performance and reliability.



<b>Air Collet Closer Model</b>	<b>LDZ-150/SNK</b>
<b>Draw Tube Stroke</b>	.394" (10mm)
<b>Max Air Pressure</b>	150 psi (10.5 kg/cm <sup>2</sup> )
<b>Max Draw Tube Force</b>	2,460 lb (1,1115 kgf)
<b>Max Speed</b>	6,000 rpm
<b>Weight</b>	12.5 lb (5.7 kg)

## Adjustable Air Collet Closer

LDZ-150/FA cylinders feature an adjustable draw tube that allows the piston stroke to be adjusted for applications requiring extremely light clamping.



<b>Air Collet Closer Model</b>	<b>LDZ/A-150/SNK</b>
<b>Draw Tube Stroke</b>	3.94" (10mm)
<b>Max Air Pressure</b>	150 psi (10.5 kg/cm <sup>2</sup> )
<b>Max Draw Tube Force</b>	2,460 lb (1,1115 kgf)
<b>Max Speed</b>	6,000 rpm
<b>Weight</b>	12.5 lb (5.7 kg)



MicroCentric Corp • 25 So. Terminal Drive, Plainview, NY 11803 • USA  
 Tel: 516-349-7220 • Fax: 516-349-9354 • e-mail: sales@microcentric.com

**1-800-573-1139**

[www.MicroCentric.com](http://www.MicroCentric.com)